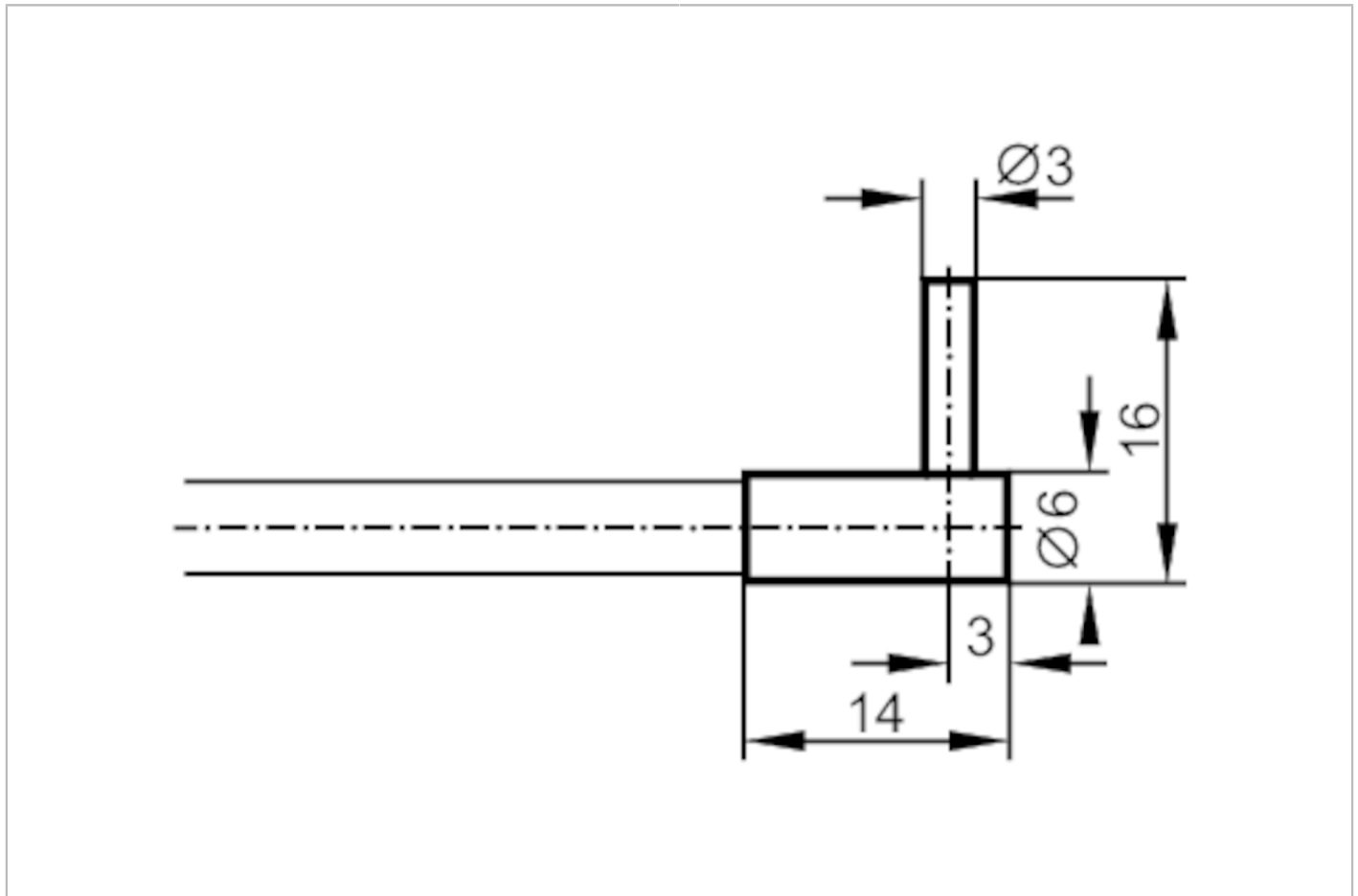


# E20500



## Fiber optic through beam sensor

FE-00-M-V-R3/1M



Application	
Function principle	Through-beam sensor
Application	High temperature resistance; Robust design for use in harsh industrial environments; Resistant to various aggressive chemicals
Monitoring range	
Range with fiber optic amplifier type	OKF; OOF; OUF
OKF	
Range of fiber optics [mm]	120
OOF	
Range of fiber optics [mm]	400
OUF	
Range of fiber optics [mm]	120
Operating conditions	
Ambient temperature [°C]	-20...150
Mechanical data	
Weight [g]	128.5
Version of sensing head	angled
Sensing head diameter [mm]	3
Sensing head length [mm]	10
Total length [mm]	1000

# E20500



## Fiber optic through beam sensor

FE-00-M-V-R3/1M

Min. bending radius	[mm]	20
Fiber arrangement		
Fiber material		glass
Fiber head material		stainless steel (1.4305 / 303)
Fiber sheath material		metal silicone
<b>Accessories</b>		
Items supplied		E20103
<b>Remarks</b>		
Pack quantity		1 pcs.