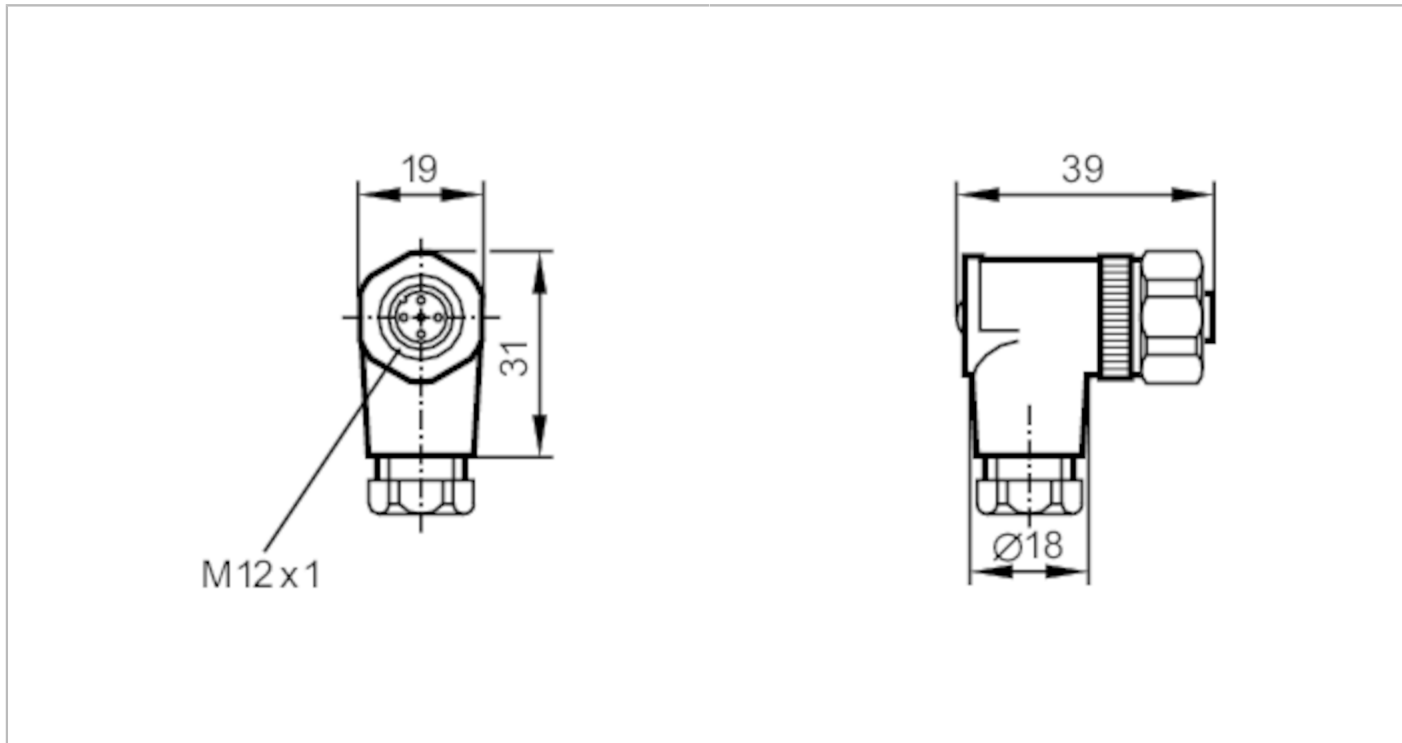


# E11252



## Female wirable connectors

SDOAH040VASFKPG



Application	
System	Free from silicone; gold-plated contacts
Free from silicone	yes
Electrical data	
Operating voltage [V]	< 45 AC / < 70 DC
Max. current load total [A]	4; (...40 °C)
Operating conditions	
Ambient temperature [°C]	-40...85
Protection	IP 67
Mechanical data	
Weight [g]	28.2
Dimensions [mm]	39 x 19 x 31
Molded-body material	PA
Material nut	stainless steel (1.4404 / 316L)
Remarks	
Pack quantity	1 pcs.

# E11252



## Female wirable connectors

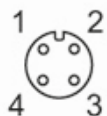
SDOAH040VASFKPG

### Electrical connection

screw terminals: ...0.75 mm<sup>2</sup>; Cable sheath: Ø 6...8 mm

### Electrical connection - Socket

Connector: 1 x M12, angled; coding: A; Moulded body: PA; Locking: stainless steel (1.4404 / 316L); Contacts: gold-plated



### Connection

