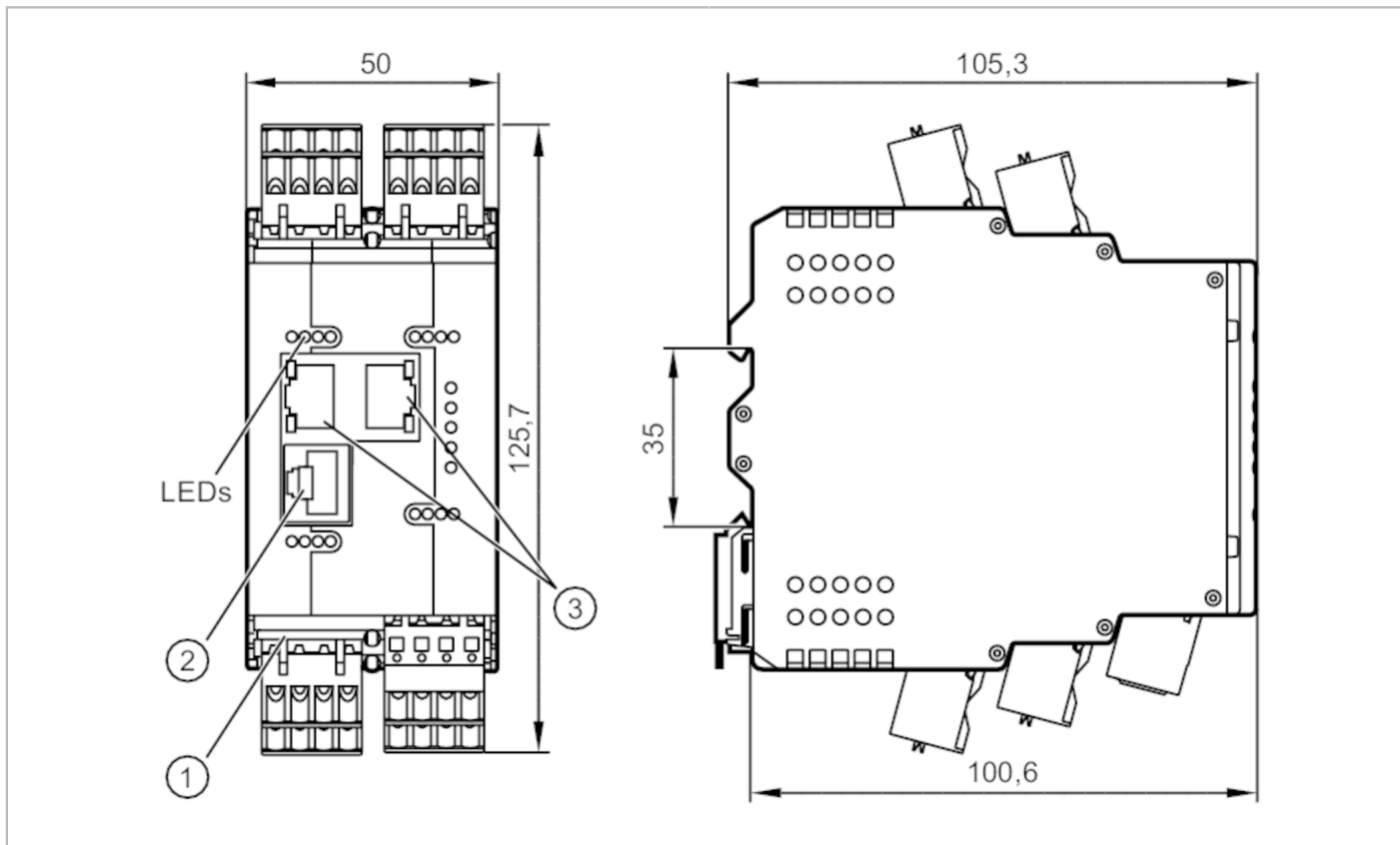


# AL1921



## IO-Link master with EtherNet/IP interface

IO-Link Master CL EIP 8P IP20



Application	
Design	housing for DIN rail mounting
Application	I/O modules for use in the control cabinet
Electrical data	
Operating voltage [V]	20...30 DC; (US ; to SELV/PELV)
Current consumption [mA]	300...3900; (US)
Protection class	III
Sensor supply US	
Max. current load total [A]	3.6
Inputs / outputs	
Total number of inputs and outputs	16; (configurable)
Number of inputs and outputs	Number of digital inputs: 8; Number of digital outputs: 8
Inputs	
Number of digital inputs	8; (IO-Link Port Class A)
Switching level high [V]	11...30
Switching level low [V]	0...5
Digital inputs protected against short circuits	yes
Outputs	
Number of digital outputs	8; (IO-Link Port Class A)



## IO-Link master with EtherNet/IP interface

IO-Link Master CL EIP 8P IP20

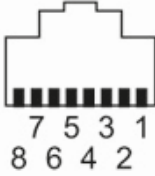
Max. current load per output [mA]	300
Short-circuit proof	yes
<b>Interfaces</b>	
Communication interface	Ethernet; IO-Link
<b>Ethernet - EtherNet/IP</b>	
Transmission standard	10Base-T; 100Base-TX
Transmission rate	10 MBit/s; 100 MBit/s
Protocol	EtherNet/IP
Factory settings	IP address: 192.168.1.250 subnet mask: 255.255.255.255 gateway IP address: 0.0.0.0 MAC address: see type label
Note on interfaces	DHCP, BOOTP, static DLR (Device Level Ring) Supported network topologies: line ring
<b>Ethernet - Internet of Things</b>	
Transmission standard	10Base-T; 100Base-TX
Transmission rate	10 MBit/s; 100 MBit/s
Protocol	MQTT JSON
Factory settings	IP address: 169.254.x.x subnet mask: 255.255.0.0 gateway IP address: 0.0.0.0 MAC address: see type label
Note on interfaces	Safety protocol: HTTPS
<b>IO-Link Master</b>	
Transmission type	COM1 (4,8 kBaud); COM2 (38,4 kBaud); COM3 (230,4 kBaud)
IO-Link revision	1.1
Number of ports class A	8
<b>Operating conditions</b>	
Ambient temperature [°C]	-25...65
Storage temperature [°C]	-25...85
Max. relative air humidity [%]	90
Protection	IP 20
<b>Tests / approvals</b>	
EMC	EN 61000-6-2 EN 61000-6-4
MTTF [years]	44
<b>Mechanical data</b>	
Weight [g]	318
Housing	rectangular
Type of mounting	Mounting on DIN rail; (TH35 (EN 60715))
Dimensions [mm]	125.7 x 50 x 105.3
Material	housing: PA orange

# AL1921



## IO-Link master with EtherNet/IP interface

IO-Link Master CL EIP 8P IP20

Accessories	
Items supplied	cage clamps: 9
Remarks	
Remarks	Further information is available in the manual.
Pack quantity	1 pcs.
Electrical connection	
voltage supply X31	
1	GND (US)
2	GND (US)
3	+ 24 V DC (US)
4	+ 24 V DC (US)
IO-Link Port Class A X01...X08	
1	Sensor supply (US) L+
2	Digital input
3	Sensor supply (US) L-
4	C/Q IO-Link
Electrical connection - Ethernet	
Connector: RJ45	
	
EtherNet IP X21, X22	
1	TX +
2	TX -
3	RX +
4	not used
5	not used
6	RX -
7	not used
8	not used
IoT X23	
1	TX +
2	TX -
3	RX x
4	not used
5	not used
6	RX -
7	not used
8	not used