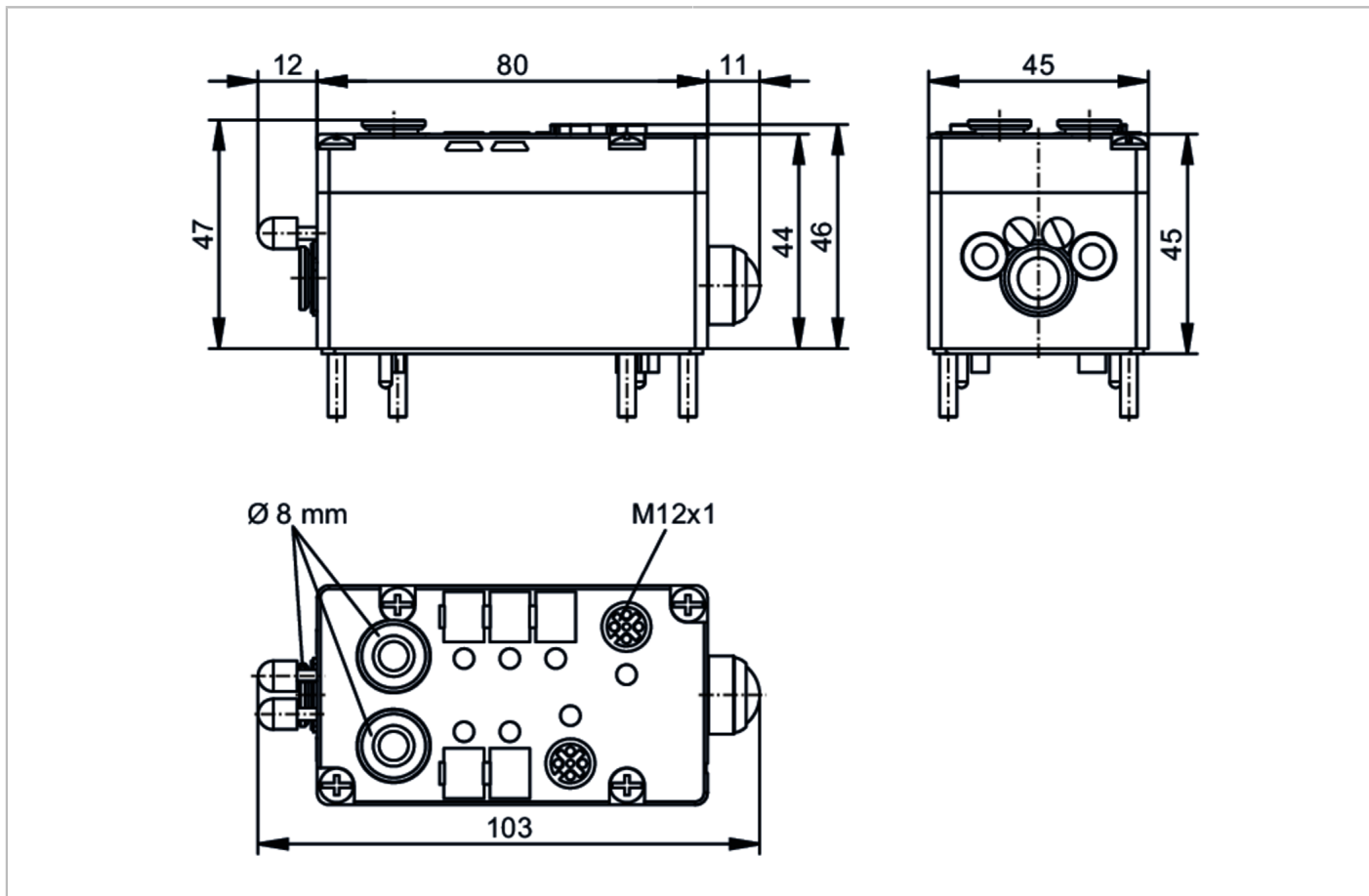


AC2042



AS-Interface Airbox

AirBox 2x2DI 2PO M12



Application	
Application	field installation; for use in wet environments
Electrical data	
Operating voltage [V]	26.5...31.6 DC
Max. current consumption from AS-i [mA]	170
Integrated watchdog	yes
Inputs / outputs	
Number of inputs and outputs	Number of digital inputs: 4; Number of pneumatic outputs: 2
Inputs	
Number of digital inputs	4; (2 x 2)
Input circuit of digital inputs	PNP
Sensor supply of the inputs	AS-i
Voltage supply [V]	20...30
Max. total current rating of inputs [mA]	100
Input current High [mA]	> 3
Input current low [mA]	< 1.5
Switching level high [V]	> 10

AC2042



AS-Interface Airbox

AirBox 2x2DI 2PO M12

Digital inputs protected against short circuits	yes
---	-----

Outputs

Number of pneumatic outputs	2
Actuator supply outputs	AS-i

Operating conditions

Ambient temperature [°C]	0...55
Note on ambient temperature	with special compressed air treatment: < 0 °C the derating of the current load indicated in the operating instructions is to be taken into account at the following ambient temperature: > 50 °C
Storage temperature [°C]	-20...80
Max. height above sea level [m]	2000
Protection	IP 65

Tests / approvals

EMC	EN 62026-2	
	EN IEC 61000-6-2	
	EN IEC 61000-6-4	
	EN IEC 61326-1	

AS-i classification

Extended addressing mode	no				
AS-i master profile	M2; M3; M4				
AS-i profile	S-7.F.F				
AS-i I/O configuration [hex]	7				
AS-i ID code [hex]	F.F				
Data bits	Data bit	D0	D1	D2	D3
	Inputs / outputs	I-1	I-2	I-3/ O-3	I-4 / O-4
	Pin	4	2	4	2

Mechanical data

Weight [g]	253.5
Housing	rectangular
Type of mounting	AS-i interface to FC and SC lower parts
Dimensions [mm]	109 x 45 x 47
Material	PBT
Pneumatic system	2 x 3/2-way seat valves
Operating pressure range [bar]	2...8
Note on working pressure range	incl. possible pressure peaks
Air flow at 6/5 bar [l/min]	350
Air flow at 6/0 bar [l/min]	550
Permissible compressed air	filtered (5 µm); lubricated (ISO-VG10) or not lubricated
Tube fittings	Legris LF 3000/8
Exhaust	integrated exhaust

Displays / operating elements

Display	Power	LED, green (AS-i)
	Switching status	LED, yellow (I1...I4, O3...O4)

AC2042



AS-Interface Airbox

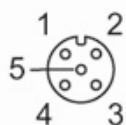
AirBox 2x2DI 2PO M12

Electrical connection	
Module connection	Flat cable
Remarks	
Remarks	Please see the notes on compressed air and EMC/ESD under "Downloads"
Pack quantity	1 pcs.

Electrical connection - Socket I-1/2

contact pins to module lower part, FK / PG:

Connector: M12; coding: A

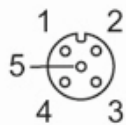


Inputs	
1	Sensor supply L+
2	Data input I2
3	Sensor supply L-
4	Data input I1
5	not used

Electrical connection - Socket I-3/4

contact pins to module lower part, FK / PG:

Connector: M12; coding: A



Inputs	
1	Sensor supply L+
2	Data input I4
3	Sensor supply L-
4	Data input I3
5	not used