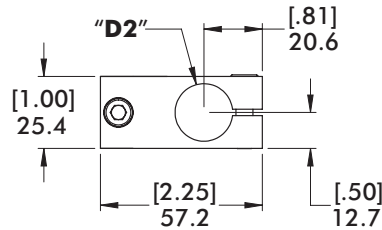
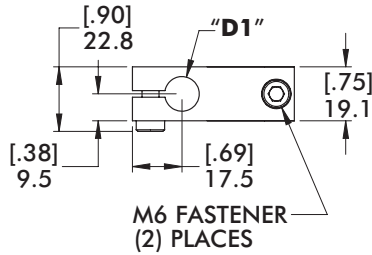


CROSS TRANSITION BRACKETS AND BLOCKS

Nominal (Ø) given
See chart on Page 72
for actual (Ø) size

Round Tooling | Dimensions | Technical Specifications

CLM Ø20mm/.75" to Ø12mm/.50"

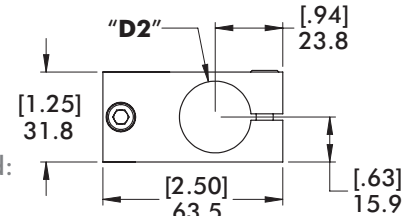
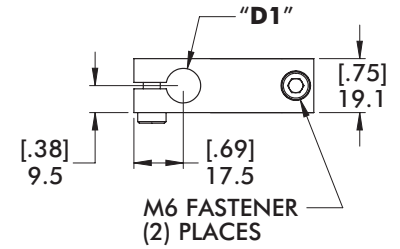


Specifications:

Max. Static
Clamp Load:
Ø20mm/.75":
20.3 N*m [15 ft-lb]
Ø12mm/.50":
13.6 N*m [10 ft-lb]
Material: Aluminum

Model Number	(Ø)"D1"	(Ø)"D2"	Weight
CPI-CLM-20M-12M	12mm	20mm	[13 lb] .06 kg
CPI-CLM-75-50	.50"(in)	.75 in	

CLM Ø25mm/1.00" to Ø12mm/.50"

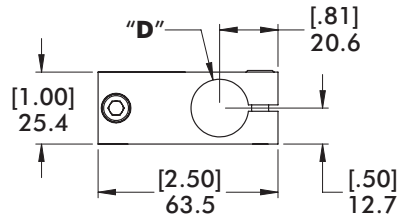
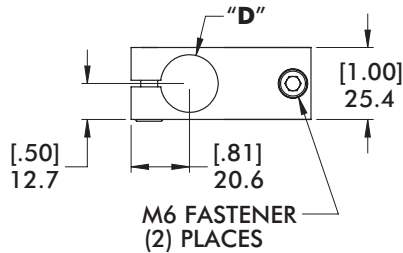
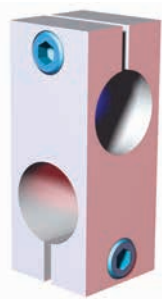


Specifications:

Max. Static Clamp Load:
Ø25mm/1.00":
67.8 N*m [50 ft-lb]
Ø12mm/.50":
13.6 N*m [10 ft-lb]
Material: Aluminum

Model Number	(Ø)"D1"	(Ø)"D2"	Weight
CPI-CLM-25M-12M	12mm	25mm	[.08 lb] .17 kg
CPI-CLM-10-50	.50"(in)	1.00"(in)	

CLM Ø20mm/.75" to Ø20mm/.75"

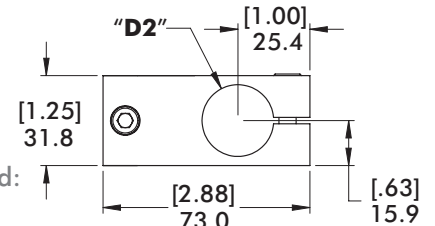
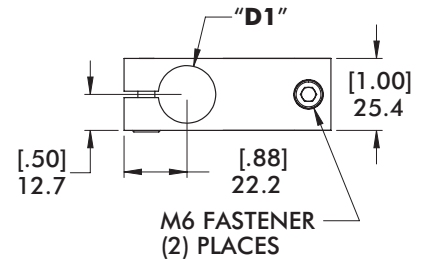


Specifications:

Max. Static
Clamp Load:
20.3 N*m
[15 ft-lb]

Model Number	(Ø)"D"	Weight
CPI-CLM-20M-20M	20mm	[.16 lb] .07 kg
CPI-CLM-20M-20M-ST	20mm	[.40 lb] .18 kg
CPI-CLM-75-75	.75"(in)	[.17 lb] .08 kg

CLM Ø25mm/1.00" to Ø20mm/.75"



Specifications:

Max. Static Clamp Load:
Ø25mm/1.00":
67.8 N*m [50 ft-lb]
Ø20mm/.75":
20.3 N*m [15 ft-lb]
Material: Aluminum

Model Number	(Ø)"D1"	(Ø)"D2"	Weight
CPI-CLM-25M-20M	20mm	25mm	[.23 lb] .11 kg
CPI-CLM-10-75	.75"(in)	1.00"(in)	