

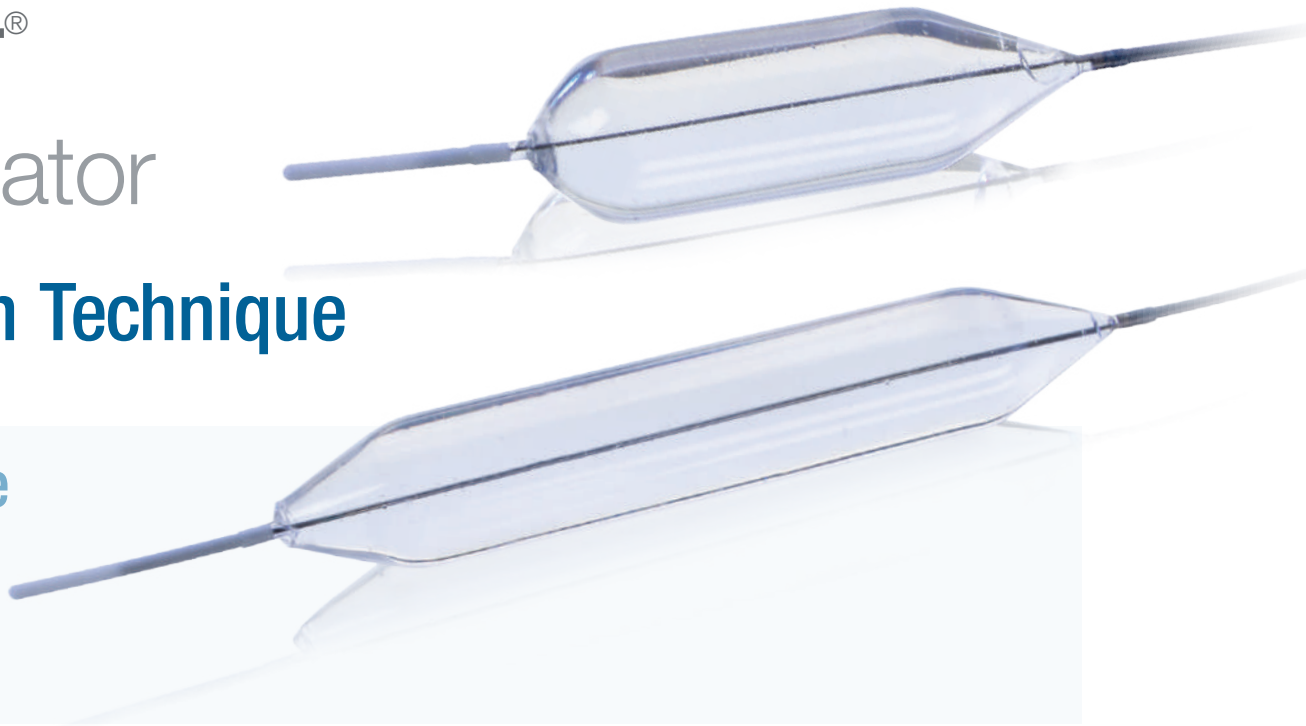
Eliminator[®]

PET Balloon Dilator

Multi-Stage Inflation Technique

The Eliminator Advantage

- No Wasting
- Valued Performance
- Accurate Sizing at Maximum Pressure



REMEMBER TO:

PRIOR TO INFLATION

- Ensure 40 cc's of fluid are in the inflation device
- Lubricate the balloon
- Attach the inflation device AFTER the balloon has been passed down the scope

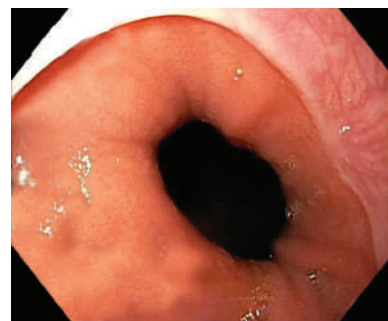
DEFLATION/REMOVAL

- Wait at least 60 seconds for deflation
- Ensure no liquid is still coming out of the balloon (check the inflation device)
- Ensure Inflation device is lower than the balloon to maximize gravitational forces

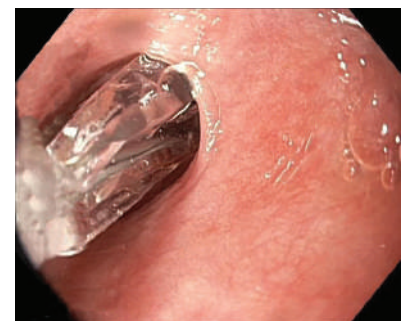
MULTI-STAGE INFLATION PRESSURE (PSI/ATM)

SKU #	Balloon Size	Stage 1	Stage 2	Stage 3*
000340	6 mm/18 Fr	60/4.1	90/6.1	120/8.2
000341	8 mm/24 Fr	60/4.1	90/6.1	120/8.2
000342	10 mm/30 Fr	45/3.1	68/4.6	90/6.1
000343	12 mm/36 Fr	45/3.1	68/4.6	90/6.1
000344	15 mm/45 Fr	30/2.0	45/3.1	60/4.1
000345	18 mm/54 Fr	25/1.7	38/2.6	50/3.4
000380	20 mm/60 Fr	25/1.7	38/2.6	50/3.4

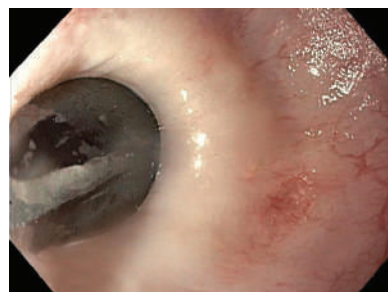
*Maximum recommended inflation pressure



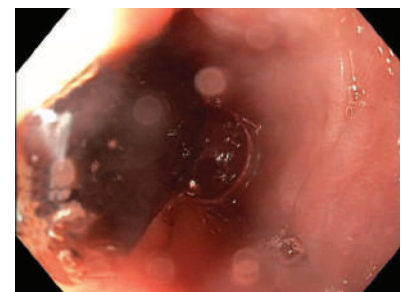
1. Locate stricture in esophagus during EGD.



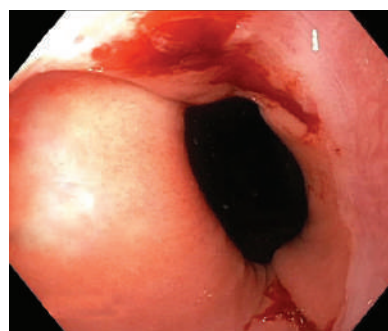
2. Position Eliminator balloon dilator at the center of the stricture.



3. Inflated dilator with water or contrast/water to 5 psi (0.4 atm) then proceed as outlined below, maintaining pressure for 30-60 seconds for each stage.



4. Maintain inflated balloon dilator in stricture for desired length of time.



5. Deflate balloon dilator under direct vision. Do not retract into endoscope until all fluid is withdrawn.

- **STAGE 1**
50% maximum recommended pressure
- **STAGE 2**
75% maximum recommended pressure
- **STAGE 3**
Maximum recommended pressure

NOTE:

The 60 cc syringe must be filled with 40cc of fluid for proper inflation and adequate vacuum.

Prior to use please consult product labels and inserts for any indications, contraindications, warnings, precautions, adverse reactions, and instructions for use.