

Impresario I

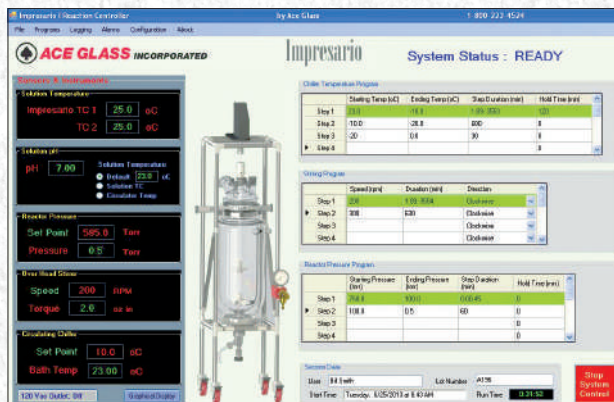
Reactor Automation Controller



The little red box with endless possibilities for almost any industry.

Impresario I

Reactor Automation Controller



OVERVIEW

Almost any lab requires some sort of standards, procedures, repeatability and the minimization of error all accomplished through data collection and recording of information. Most systems on the market to assist with control and recording are complicated and expensive, only available to the few or those willing to take on another task learning how to integrate the new tool into their lab environment. The Impresario sheds all of the complications and integration issues and creates a streamlined and economical platform, simplifying its

introduction into the user's lab. It was created to be a user-designed platform from which a multitude of instruments, apparatus, and sensors can be monitored, controlled and logged. This versatile little red box can perform the most basic of tasks or be programmed to handle the most intricate automation. The Base Unit is designed as the introductory platform from which further integration can be performed. Automation control is easily managed via a recipe style user-programmed interface.

6458-10* DETAILS

Included with the Impresario I Base Unit:

- pH monitoring
- Thermocouple probe temperature monitoring
- Vacuum/Pressure monitoring and control (with the addition of a vacuum valve and vacuum controller)
- Overhead stirrer monitoring and control of speed and torque (IKA, Heidolph, Ace XP ¼ or ½hp DC motors)
- Circulator monitoring and control (Lauda, Julabo, PolyScience)
- Auxiliary 120VAC/7amp outlet for programmable on/off contact
- (3) RS-232 ports
- (4) Digital pin jack inputs 0-5Vdc / (4) 0-24Vdc signal output pin jacks
- One free specialized program or recipe

A Impresario software

System Requirements

- PC running Windows XP, Windows 7, 8 and 10
- 250 MB of disk space
- Minimum of 1GB ram
- USB port
- Microsoft Excel or similar application with the ability to read a .CSV generated file
- CFR 21 part 11 Compliant recording output

Accessories (not included in base system)

- Lab notebook/Laptop
- Cables for peripheral connections
- Vacuum proportioning control valve or vacuum controller
- Peripheral equipment or probes
- Device drivers for additional peripherals

Examples of additional Peripheral Drivers that can be created:

- Balances
- Circulators/Water baths
- Liquid pumps (peristaltic and syringe)
- Solids pumps
- Vacuum pumps, sensors, and controllers
- Pressure sensors and controllers
- Flow meters
- Turbidity sensors
- Ultrasonic equipment
- Temperature controllers and sensors
- pH controllers and sensors
- Dissolved oxygen sensors
- Heating mantles, tapes, and Instatherm
- Hot plate stirrers
- Valves
- Dosing or powder additions systems
- Overhead stirrers or mixing equipment
- Level measurement and control (communication ports required on peripheral devices)

*Ace Order Code for the Impresario I Base Unit.

Call our Technical Department or visit the Technical Support section of our website today.

856-692-3333 LOCAL 800-223-4524 TOLL FREE

www.aceglass.com



Ace Glass Inc. P.O. Box 688 • Vineland, NJ 08362 • 800-223-4524 • F: 800-543-6752 • www.aceglass.com • sales@aceglass.com